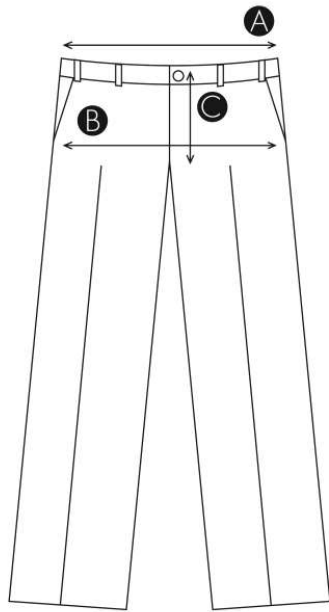


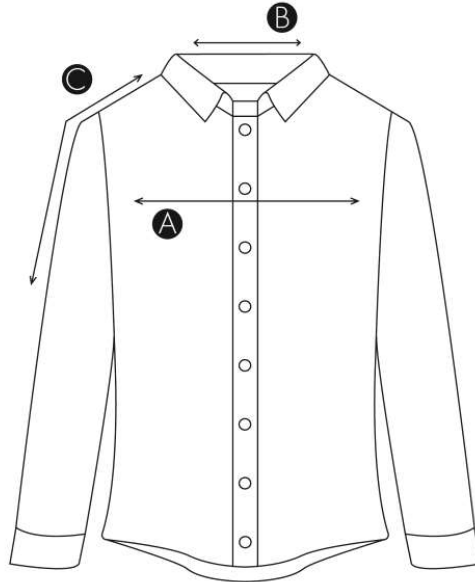
PULLS & T-SHIRTS

	S	M	L	XL	XXL
EU	44-46	48-50	52-54	56-58	60-62
Ⓐ Poitrine cm	80-88	88-96	96-104	104-112	112-120
Ⓑ Encolure cm	36-37	38-39	40-41	42-43	44-45
Ⓒ Longueur bras cm	62-63	63-64	64-65	65-65,5	65,5-66



PANTALONS

	S	M	L	XL	XXL
EU	38	40	42	44	46
Ⓐ Taille cm	64-72	72-80	80-88	88-96	96-104
Ⓑ Hanches cm	84-90	90-96	96-102	102-108	108-114
Ⓒ Entrejambe cm	83	84	85	85,5	86



CHEMISES

	S	M	L	XL	XXL
EU	44-46	48-50	52-54	56-58	60-62
Ⓐ Poitrine cm	80-88	88-96	96-104	104-112	112-120
Ⓑ Encolure cm	36-37	38-39	40-41	42-43	44-45
Ⓒ Longueur bras cm	62-63	63-64	64-65	65-65,5	65,5-66



VESTES

	S	M	L	XL	XXL
EU	44-46	48-50	52-54	56-58	60-62
Ⓐ Poitrine cm	80-88	88-96	96-104	104-112	112-120
Ⓑ Encolure cm	36-37	38-39	40-41	42-43	44-45
Ⓒ Longueur bras cm	62-63	63-64	64-65	65-65,5	65,5-66